

ULTRA
LIVING HOMES

U

TWO STOREY

Bohemian 35

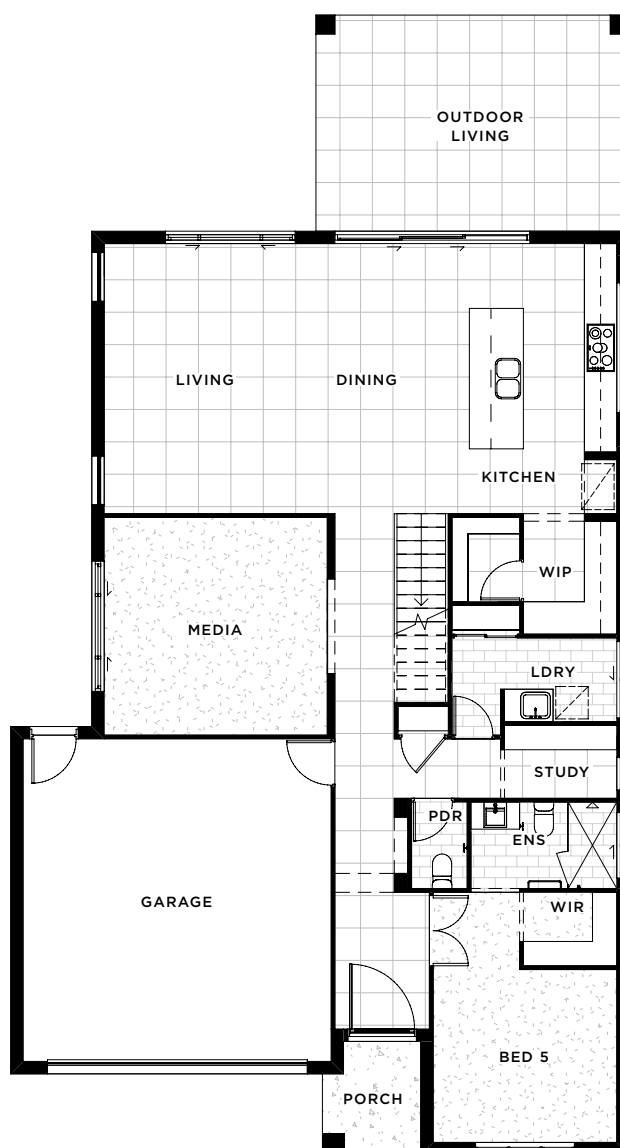
SUITS 15M+ FRONTAGE

Bohemian 35

5 3 2 3

The Bohemian 35 responds to your heart's desires in a way you won't have felt before. Rarely will you find a luxury two storey home showcasing all the best elements of a modern family home.

The stylish and well appointed Bohemian 35 ticks all the boxes. Offering 5 spacious bedrooms, including a master bedroom with ensuite and walk in robe on each level, this home will turn heads! The central timber staircase opens onto the open plan dining and living area, creating the perfect place for casual entertaining.

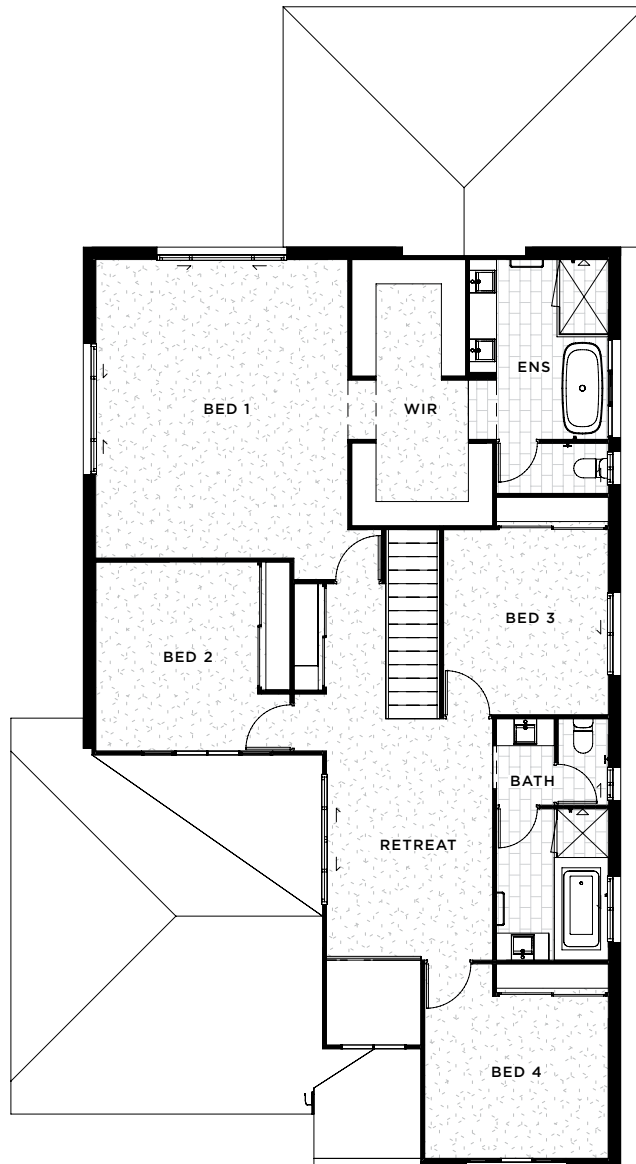


Overall Sizes

Squares	34.69sq
Overall size	322.34m ²
House length	21.1m
House width	11.45m
Min. lot width	12.5m
Min. lot depth	28m

Room Sizes

Garage	5.97m x 5.7m	Living	5.0m x 4.0m
Bed 1	5.53m x 4.67m	Media	4.0m x 4.1m
Bed 2	3.5m x 3.0m	Dining	5.0m x 2.75m
Bed 3	3.43m x 3.05m	Retreat	4.35m x 3.05m
Bed 4	3.0m x 3.4m	Outdoor Living	4.0m x 5.8m
Bed 5	3.2m x 3.4m		





Luxe Living

Luxe Living is the ultimate definition of tailored, custom designed living. Only for the select few, Luxe Living is a dedicated approach to custom designing and hand crafting a new home, so that it perfectly matches the exacting requirements of its new owners. Ultra Living Homes have created a unique experience for our most exclusive clients as they pursue the ultimate custom designed home.

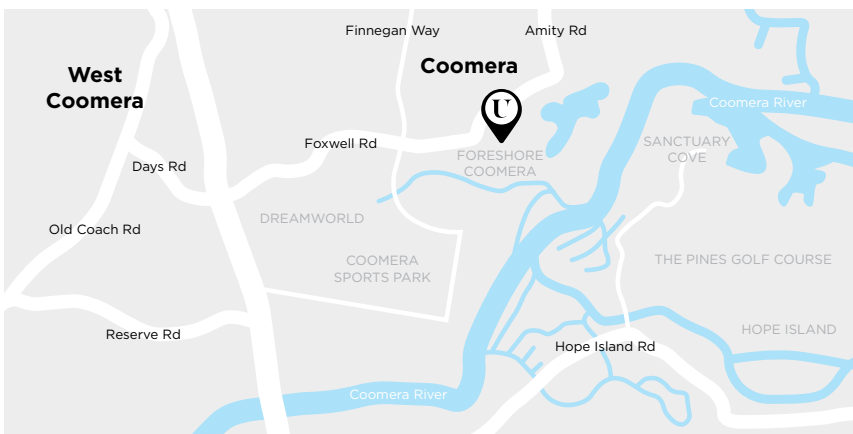
Distinction inclusions

Live your life by distinction. Ultra Living Homes Distinction Inclusions are your chance to live the life of luxury you have always wanted. Elegant finishes have been coupled with the most liveable floor plans. Luxury is finally attainable at an affordable price.



Inspire inclusions

Fall in love with our Inspire inclusions. The Inspire range offer great affordability coupled with stylish finishes that are perfectly suited for the growing family, first timers or savvy investors. Explore the world of Inspired living with Ultra Living Homes to see for yourself the endless possibilities. Combined with functional and fashionable tailor made floor plans, you will love coming home to your Ultra Living Home.



Display Home Address

📍 5 & 7 Forrestdale Street,
Foreshore Coomera,
Coomera, Qld 4209

🕒 Open 9am to 4pm 7 Days



📞 5529 0481

📍 Unit 17, 9-15 Sinclair Street, Arundel, Qld 4214 Australia

✉ info@ultraliving.com.au | QBCC Licence No.15022819

ultralivinghomes.com.au