

**ULTRA**  
LIVING HOMES

**U**

TWO STOREY

**Bohemian 41**

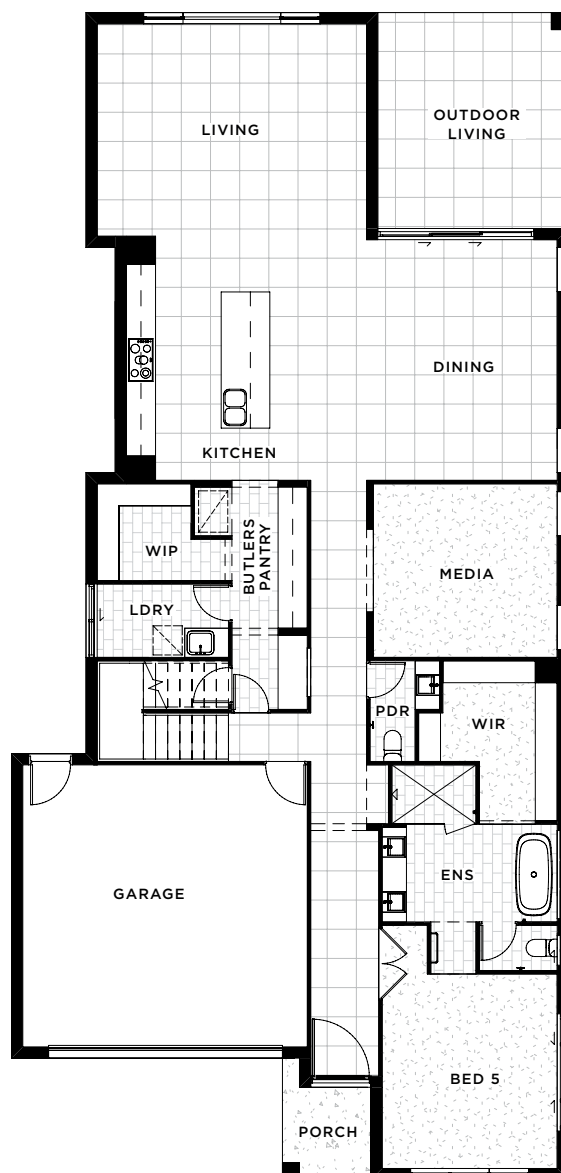
SUITS 15M+ FRONTAGE

# Bohemian 41

5 3 2 3

## When space and opulence meet to create the ultimate family home.

Fall in love with your very own soaring void, floating above the grand entry. This home is a real head turner, featuring five spacious bedrooms, including spacious master suites on each level. With multiple living spaces, this home is perfect for a large, growing family or dual living option. The living room and dining room are of epic proportions, providing the ultimate entertaining space.

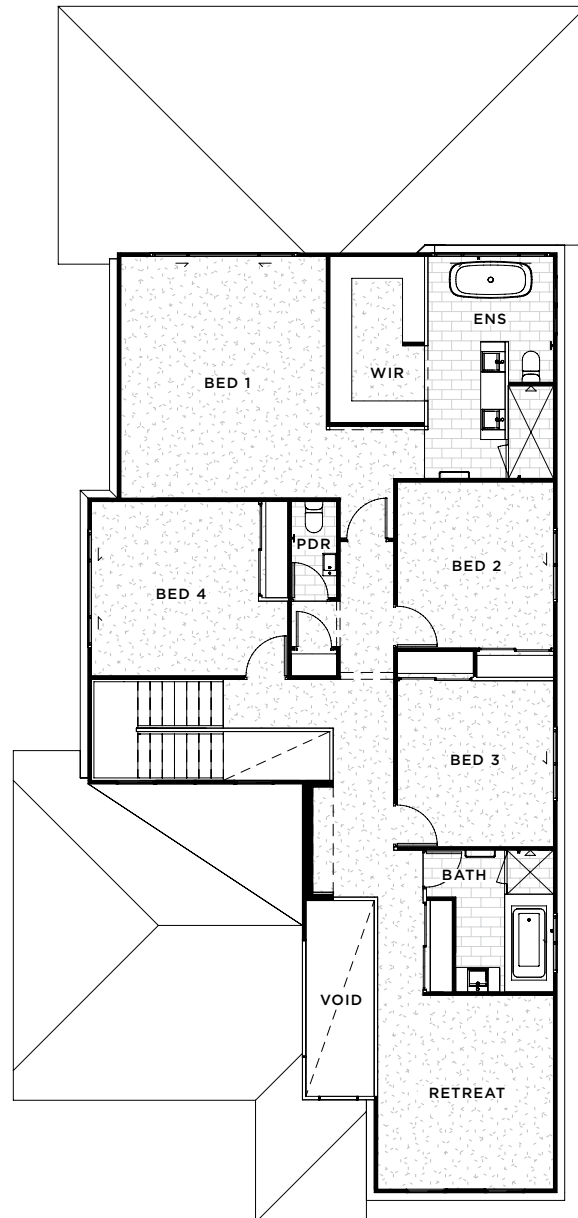


## Overall Sizes

Squares	40.56 sq
Overall size	376.83m <sup>2</sup>
House length	24.0m
House width	11.45m
Min. lot width	12.5m
Min. lot depth	30m

## Room Sizes

Garage	5.8m x 5.85m	Living	4.37m x 5.54m
Bed 1	4.95m x 4.2m	Media	3.57m x 3.78m
Bed 2	3.4m x 3.2m	Dining	4.95m x 5.9m
Bed 3	3.4m x 3.2m	Retreat	3.97m x 3.6m
Bed 4	3.57m x 3.42m	Outdoor Living	4.44m x 3.92m
Bed 5	4.0m x 3.6m		





## Luxe Living

Luxe Living is the ultimate definition of tailored, custom designed living. Only for the select few, Luxe Living is a dedicated approach to custom designing and hand crafting a new home, so that it perfectly matches the exacting requirements of its new owners. Ultra Living Homes have created a unique experience for our most exclusive clients as they pursue the ultimate custom designed home.

## Distinction inclusions

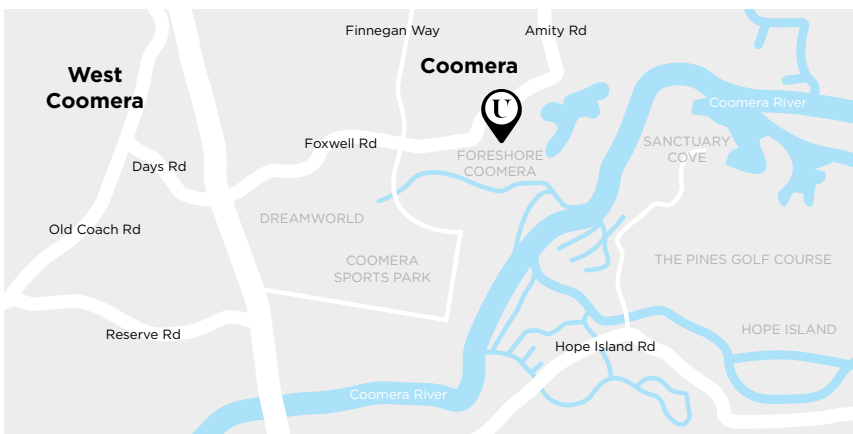
Live your life by distinction. Ultra Living Homes Distinction Inclusions are your chance to live the life of luxury you have always wanted. Elegant finishes have been coupled with the most liveable floor plans. Luxury is finally attainable at an affordable price.



*inspire*  
INCLUSIONS

## Inspire inclusions

Fall in love with our Inspire inclusions. The Inspire range offer great affordability coupled with stylish finishes that are perfectly suited for the growing family, first timers or savvy investors. Explore the world of Inspired living with Ultra Living Homes to see for yourself the endless possibilities. Combined with functional and fashionable tailor made floor plans, you will love coming home to your Ultra Living Home.



## Display Home Address

📍 5 & 7 Forrestdale Street,  
Foreshore Coomera,  
Coomera, Qld 4209

🕒 Open 9am to 4pm 7 Days



📞 5529 0481

📍 Unit 17, 9-15 Sinclair Street, Arundel, Qld 4214 Australia

✉ info@ultraliving.com.au | QBCC Licence No.15022819

[ultralivinghomes.com.au](http://ultralivinghomes.com.au)